





CASA AMATE | Andaz Mayakoba Resort Riviera Maya, Mexico

Casa Amate is the properties signature dining destination, a unique restaurant and bar located on a rock outcropping overlooking an inland lagoon. Like all venues, it is reachable by cart but distinctively accessed by foot via a nearby pedestrian bridge. The building is designed as a rural house that may have been created and lived in by an eclectic world traveler with interests in exploration, ecology, astronomy, and artifacts- particularly in Latin America.

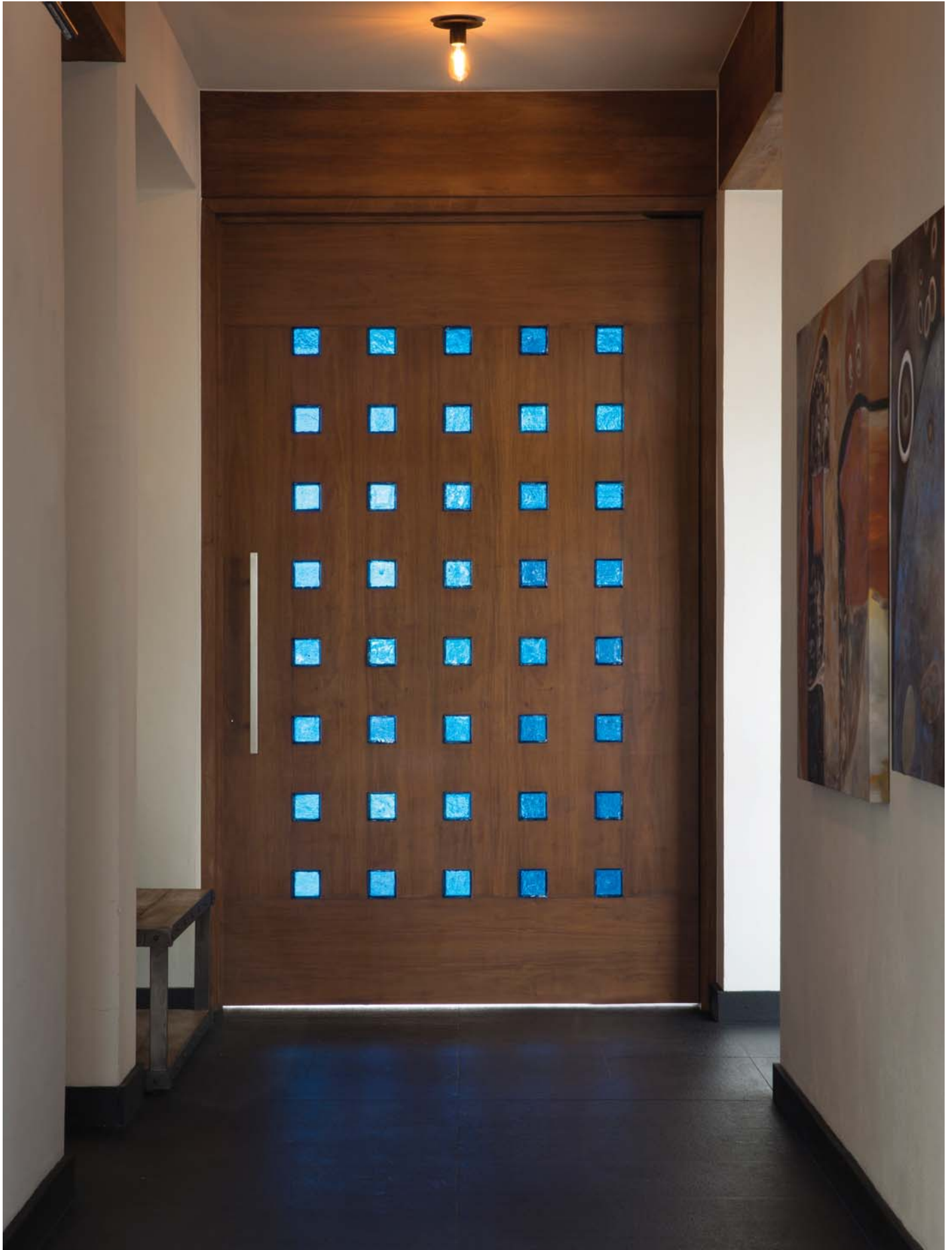
As a house, it has domestic rooms that surround a courtyard with a special tree. Each intimate room, converted as it would have been the archeologist's house has a specific design, each with dining for 16 to 20 people. Near the entry is the "Study", which incorporates a small bar and will function as a lounge with residential furniture, a map collection, and shelves with artifacts.

The next room is the "Library", which is lined with bookshelves on all walls, plus a large library table that is for groups or for guests to share. At the other end is the "Living Room", which has a fireplace, shelves for collectables, and large format art with dining at various types of tables and chairs. Lastly is the "Dining Room", with large sets of doors that connect to the courtyard and overlook the lagoon. This room has more traditional dining furniture and also features art on the walls by a local artist.

The design was inspired by traditional Mexican materials applied in a modern way. A layer of domestic warmth and authenticity is drawn from the furniture, fabric and patterns of rugs, tiles and the many accessories all sourced for their uniqueness and historical connection to Mexican culture. The collections are displayed throughout each of the various rooms as though they have been accumulated over the years and passed down from generation to generation. They provide a glimpse into the Explorer's life, connecting the past to the present.

The exterior and some of the interior is made with local stone, combined with stained wood, plaster, tile, and concrete. The colors are more subdued and classic than the vibrant colors of the other restaurants. This is a precious nighttime destination for dinner and lounging with a sense of history, while remaining contemporary.















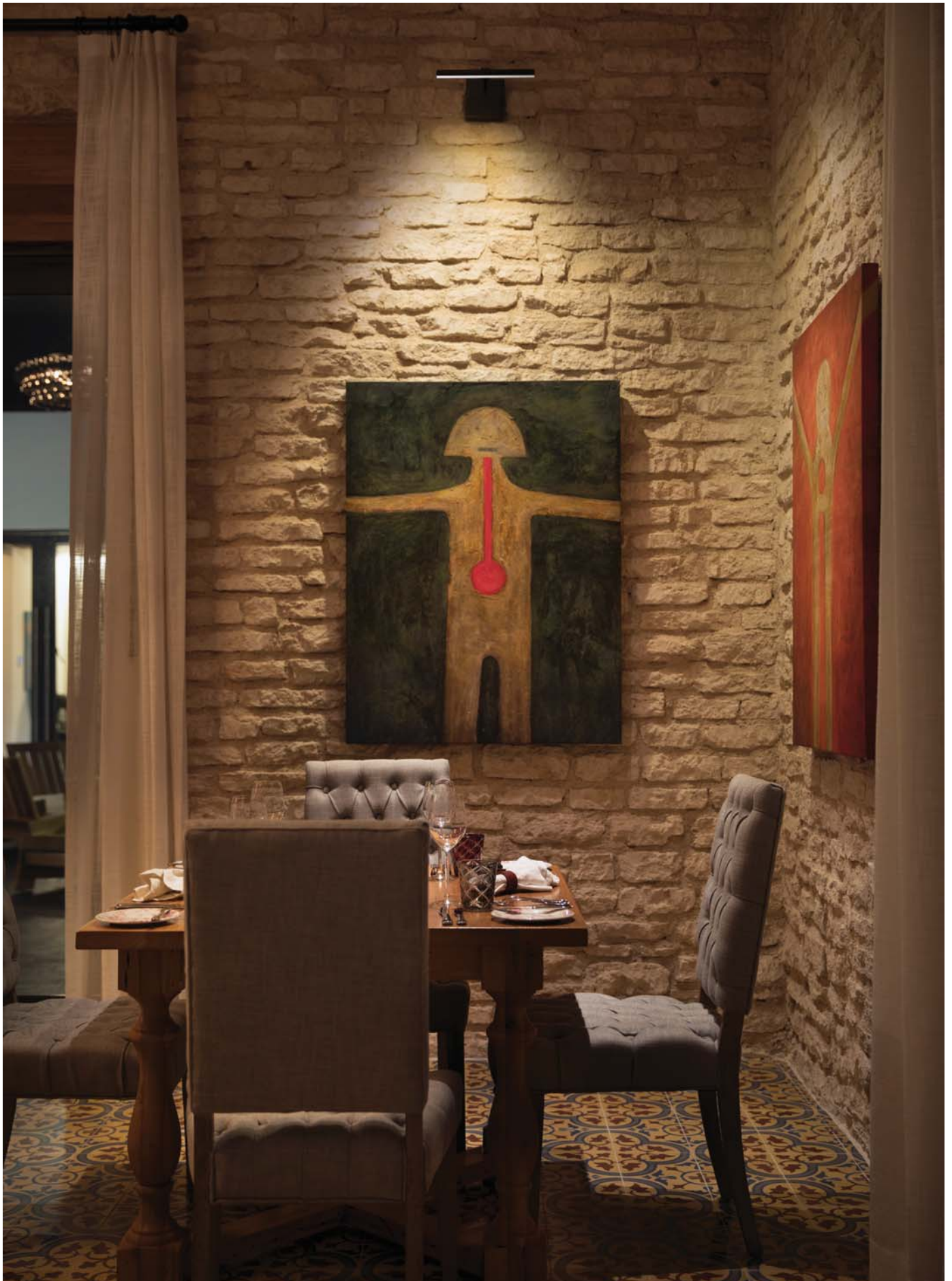






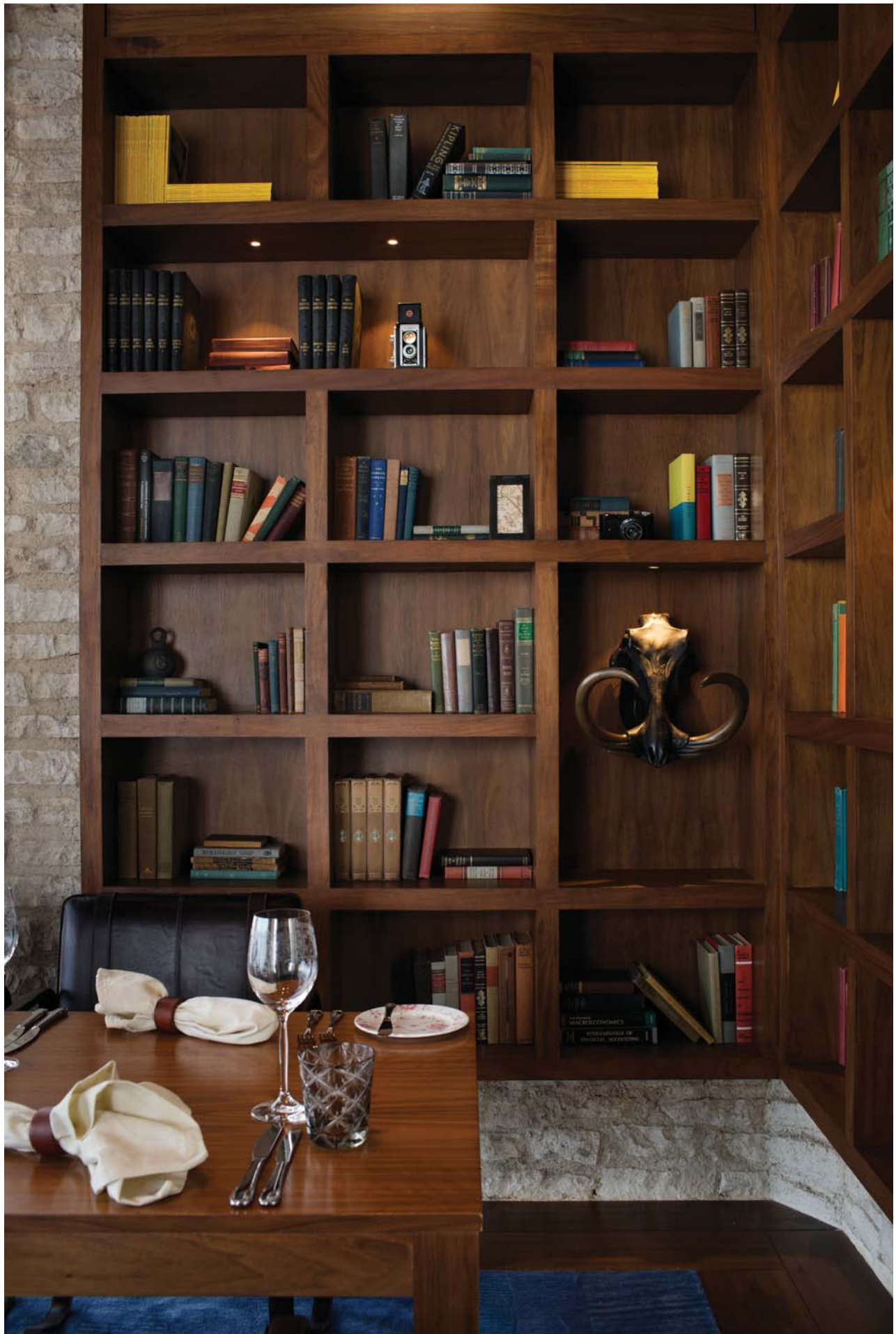












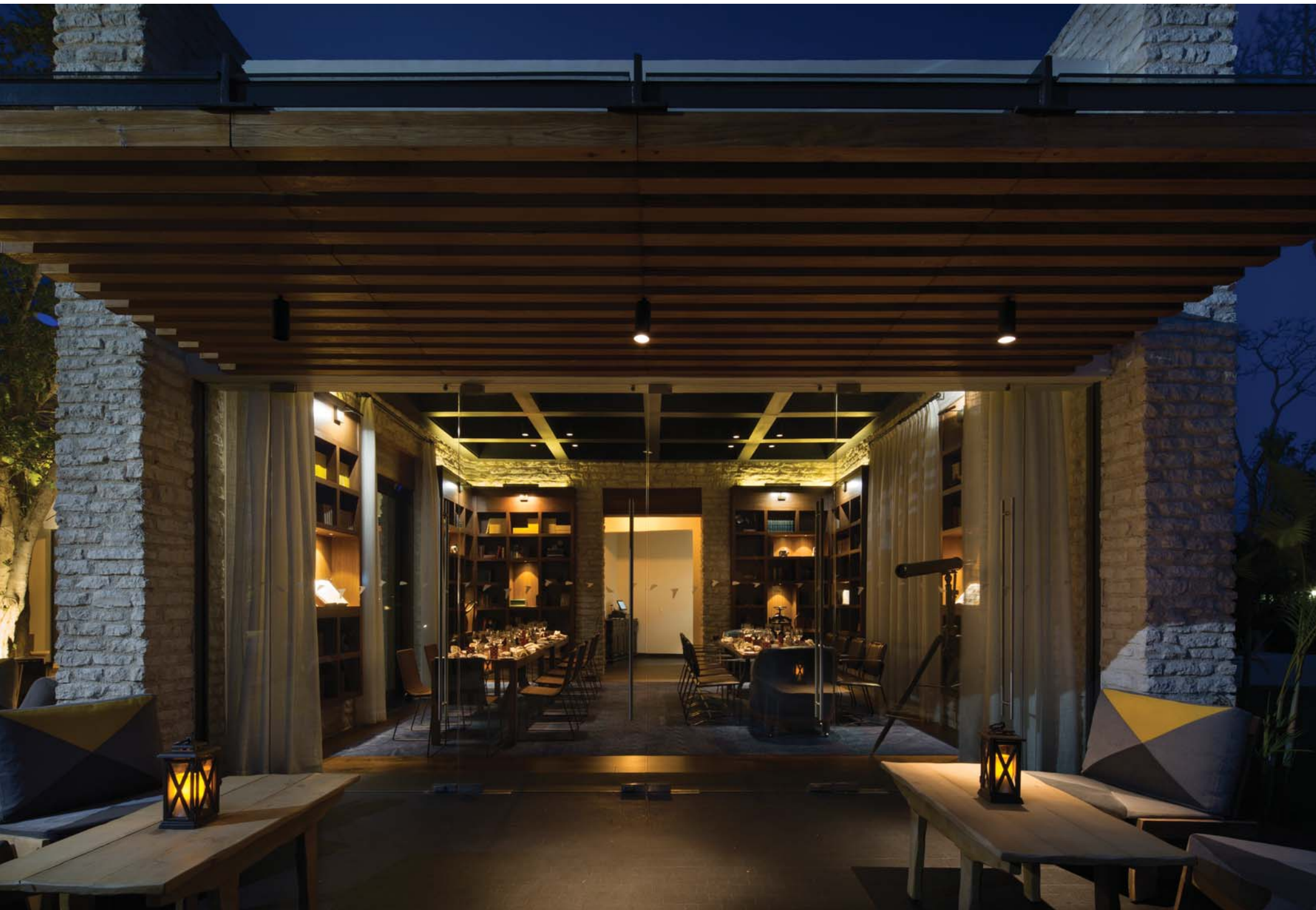














- | | |
|------------------|--------------------------|
| 1 ENTRY TERRACE | 7 COURTYARD |
| 2 ENTRY | 8 DINING ROOM |
| 3 HOST | 9 TERRACE |
| 4 WINE ROOM | 10 LIVING ROOM |
| 5 STUDY BAR | 11 RESTROOMS |
| 6 LIBRARY DINING | 12 BACK OF HOUSE KITCHEN |

0 1m 2m 4m 8m

